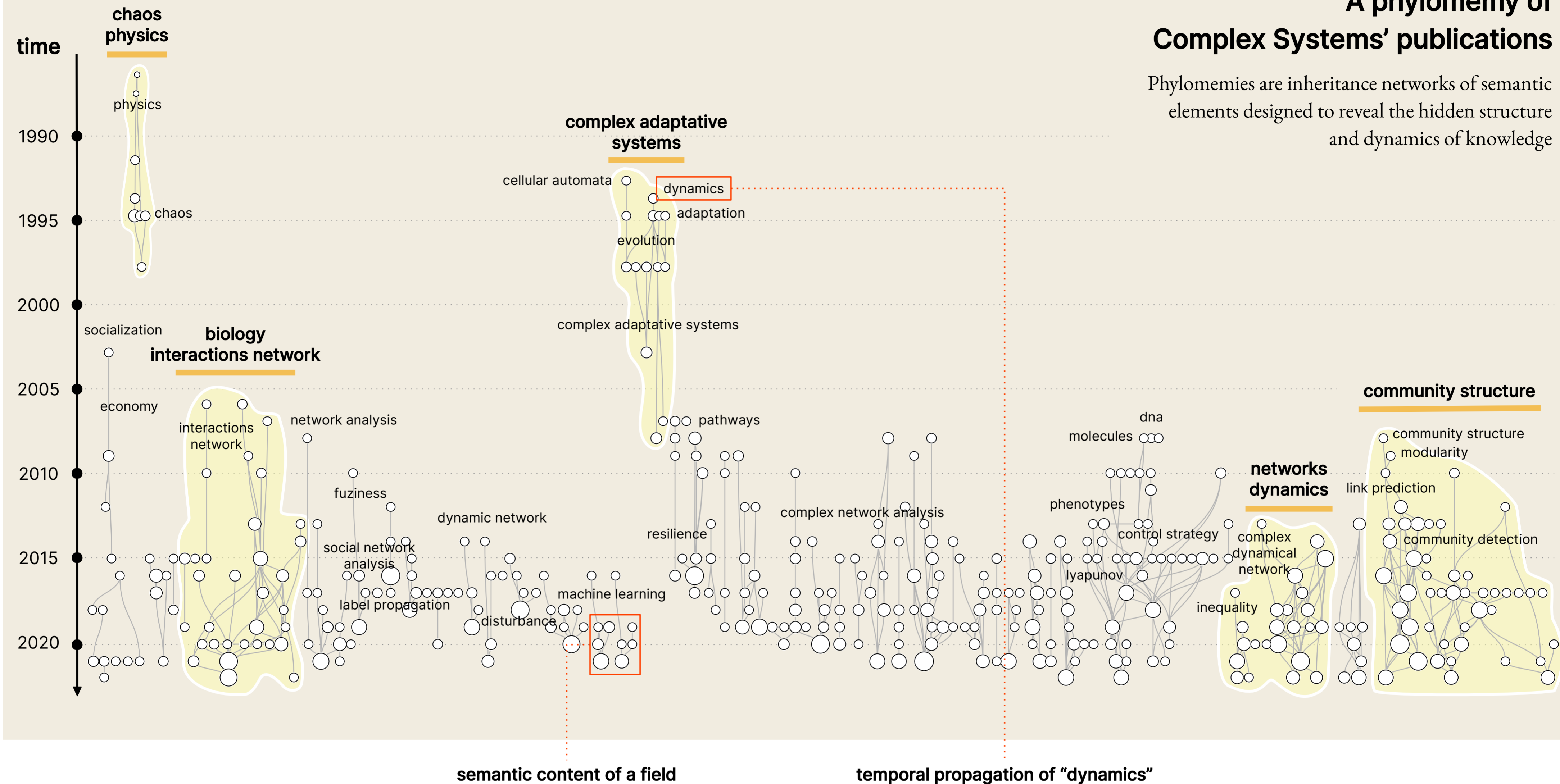


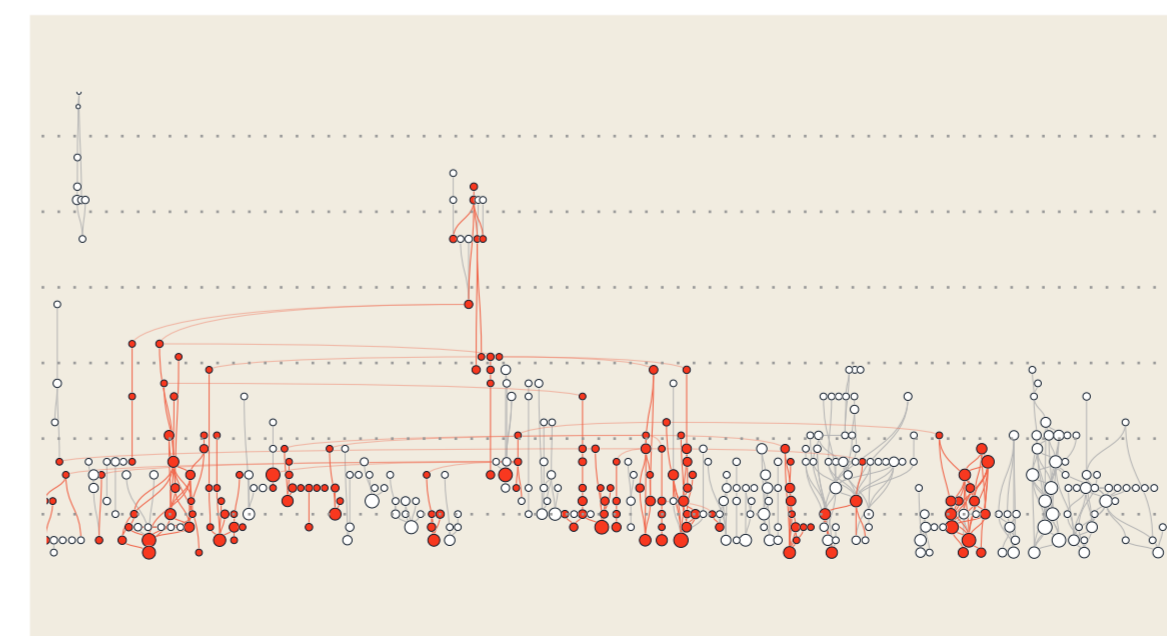
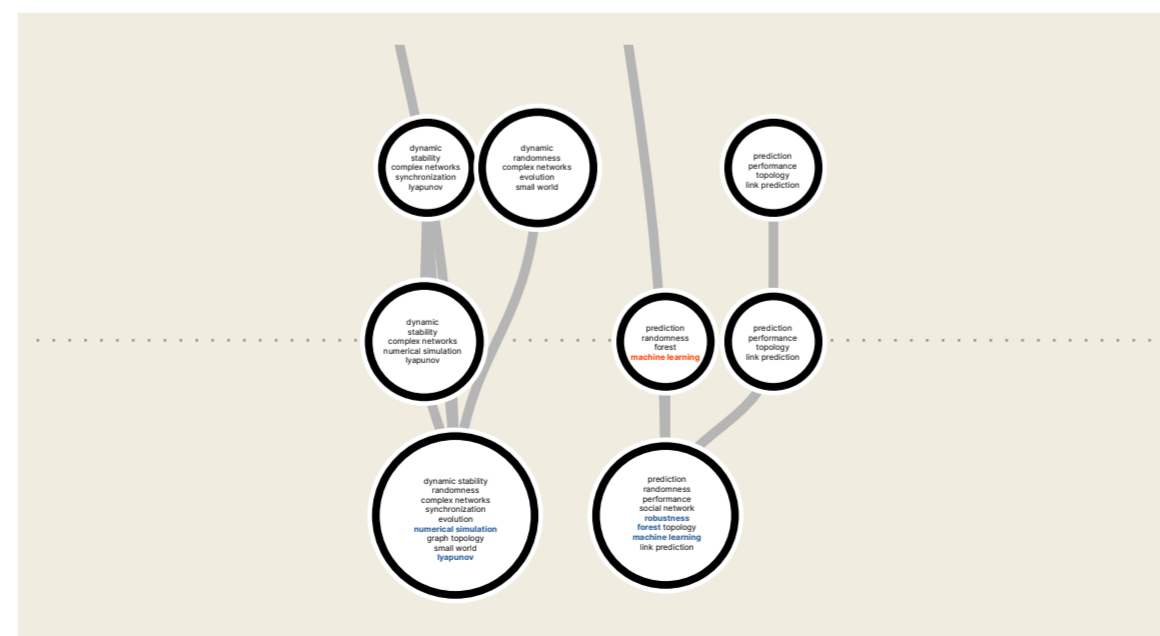
A phylomemy of Complex Systems' publications


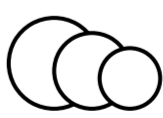

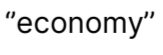
Phylomemies are inheritance networks of semantic elements designed to reveal the hidden structure and dynamics of knowledge



This phylomemy has been reconstructed out of a corpus of 15000 publications extracted from the Web of Science and published between 1978 and 2021.

Lobbé Q, Delanoë A, Chavalarias D. Exploring, browsing and interacting with multi-level and multi-scale dynamics of knowledge. Information Visualization. September 2021.



-  field of research
-  number of publications in a field
-  branch of knowledge
-  "economy" emerging term

